



The Wilson Funeral Home, Inc.

Outer Interment Receptacle Options

Rough Box
Concrete Grave Liner



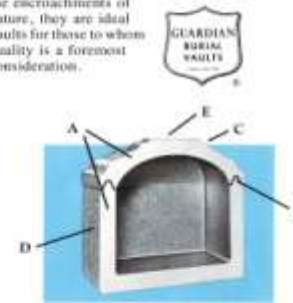
are scientifically engineered to provide basic grave protection at minimum cost. Far stronger and more durable than required to sustain earth weight and stress, they feature:

- Reinforced Precast Concrete Construction
- Arched Cover for Maximum Strength and Rigidity
- No Seal

"Guardian"
Reinforced Concrete



Guardian Burial Vaults combine the toughness of steel with the massive strength of concrete... at an affordable price. The Guardian Standard with its classically unadorned cover and Guardian Deluxe with arched, stress-resistant moulded cover both provide durable protection in a clean, modern style. Strong enough to maintain the integrity of the grave and tough enough to resist the encroachments of nature, they are ideal vaults for those to whom quality is a foremost consideration.



CONSTRUCTION

- A Constructed of high-strength reinforced concrete
- B Pyramid "V" type tongue-in-groove seal bonds cover to base to form a single integral unit
- C Arched cover constructed to resist stress and support heavy weight
- D Choice of beautiful finishes to harmonize with any casket color
- E Personalized name/date plaque and religious or funeral insignia

"Sentinel"

Polystyrene Lined Concrete

is the most popular Eagle burial vault. It combines the strength of over a ton of reinforced concrete with a moisture resistant polystyrene inner liner to provide a burial vault of superb value and quality to the family.



Seamless polystyrene inner liner (with reinforced angles) bonded to high-strength, reinforced concrete.



Tongue-and-groove base and cover hermetically sealed by special butyl rubber sealing compound.



Available in several attractive high-gloss colors in textured finish, the Sentinel is personalized by a name plaque and religious or funeral designs.



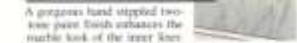
"Seville"
Polystyrene Lined
Concrete

is a superior vault which combines the classic look of fine white marble with unparalleled burial vault technology, affording the family a product of timeless beauty and distinction.

This thick polystyrene inner liner (with the look of white marble) bonded to over a ton of reinforced concrete.

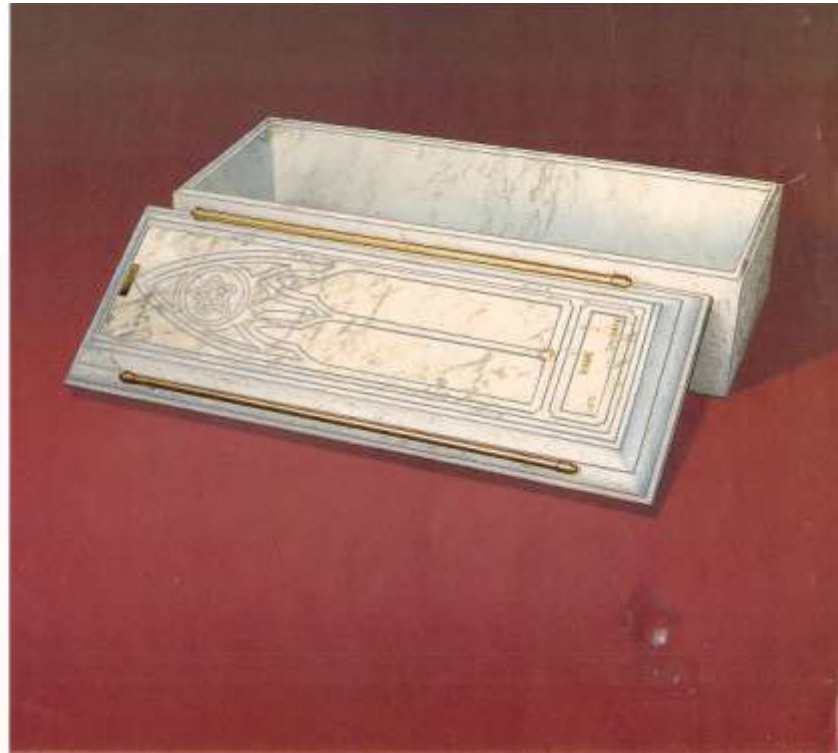


Butyl rubber sealing compound hermetically bonds base and cover into a single airtight resistant seal.



A gorgeous hand striped two-tone paint finish enhances the marble look of the inner liner.

A matching cover shield and gold tone extensions but handles offer the covering touch, along with a personalized name and date plaque.



*"Regency"
Stainless Steel
Lined Concrete*

is a truly luxurious vault. Its warranted concrete and polystyrene structure is enhanced by a gleaming mirror finish 26-gauge stainless steel sheet lining. The Regency affords a lasting tribute and monument for your family.

Protective polystyrene inner liner bonded to high strength reinforced concrete.



Butyl rubber sealing compound hermetically seals base and cover.

26-gauge stainless steel flashing liner, bonded to interior of both base and cover, and matching stainless steel cover shield provide a brilliant, durable and corrosion resistant finish.

Available in a wide range of complementary high gloss paint finishes, the Regency has custom style hardware and is adorned by personalized name plaques and religious or historical inscriptions.



"Pantheon"
Copper Lined Concrete

Is a superb vault... the top of the Eagle line. A gleaming polished copper sheet finishing liner is bonded to a protective concrete and polystyrene structure, affording your family the finest burial vault, the ultimate in beauty and protection.



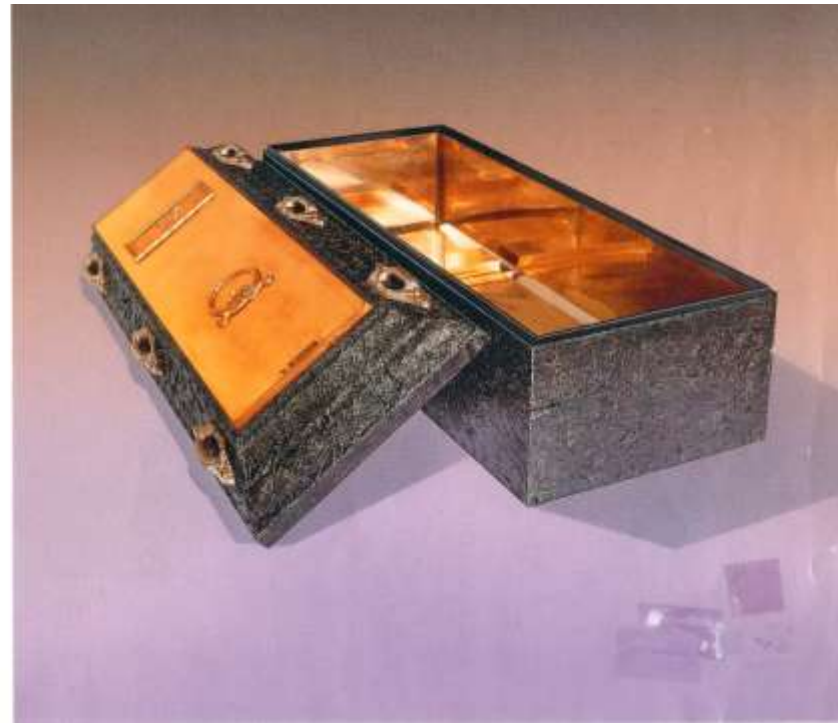
Protective polystyrene inner liner bonded to high strength reinforced concrete.

Butyl rubber sealing compound automatically bonds base and cover into a single resistant resistant unit.



Solid copper sheet finishing liner, bonded to the interior of both base and cover, with matching exterior copper shield.

Rich high gloss metallic paint finish and six corner style handles adorn the Pantheon lid. Name-date plaque and religious or fraternal insignia provide the closing touch.



*"Eagle Bronze"
Bronze Lined Concrete*

is a truly outstanding burial vault in every way. The exterior's handsome embossed finish reflects the dignity your loved one deserves. The highly polished Bronze sheet liner is bonded to a concrete and polystyrene structure. The finest materials combine to make the Eagle Bronze our crowning achievement and your ultimate choice in a burial vault.

It is. Bronze sheet finishing liner bonded to the interior base and cover with matching exterior Bronze cover shield. Bronze-plated extension bars and matching name-plate and emblem provide the final elegant touches.

Butyl rubber sealing compound hermetically bonds base and cover into a single moisture resistance unit.



The Eagle Bronze Burial Vault has a protective polystyrene inner liner bonded to high strength reinforced concrete. Also featured is a large, deeper arch with more weight in the cover for added strength, durability and protection.



the Eagle Bronze